



# ESS Emergency Safety Shower Water Heater

Tepid Water for Emergency Safety Shower/Eyewash Stations

## Features

- Heavy Duty Construction with Hydrastone cement lining provides tank longevity
- Copper-silicon alloy tappings cannot rust nor corrode
- High impact composite jacket cannot rust nor corrode and eliminates potential damage during installation and transit
- 3" thick polyurethane foam insulation reduces standby heat loss by over 24% compared to industry standard 2" insulated tanks

## Perfectly Packaged System

- Factory packaged with the Therm-O-Mix® Station/WWM simplifies installation and ensures the safe and reliable supply of tepid water
- All electrical operating controls are factory selected and wired to ensure reliable operation
- Dial gauge provides visual indication of water temperature and pressure



## Safety

- Mixing valve designed specifically for emergency drench systems ensures a constant flow of tepid water
- Mixing valve prohibits delivery of overheated water to prevent scalding
- Provides tepid water even when an accident causes a loss of electric power
- Reduces the risk of Legionella because water is stored at an elevated temperature

## Reliable

- Full five (5) year non pro-rated tank warranty
- Each valve is performance tested at the factory to ensure proper operation

# ESS Part Number Designation

Valve Criteria						
Family Designation	Storage Capacity	Tepid Water Temperature	Standard Ratings KW	Tank Type	Voltage/Phase/HZ	
	0=120 Gal.	0=85°F	0=1.5 1=3 2=4 3=4.5 4=6 5=10 6=7 7=12	0= SL (Hydrastone Cement Lined)	0=240-1-60 1=480-3-60 2=208-1-60 3=277-1-60 4=120-1-60 5=480-1-60 6=208-3-60	
389	0	0	3	0	0	0 000

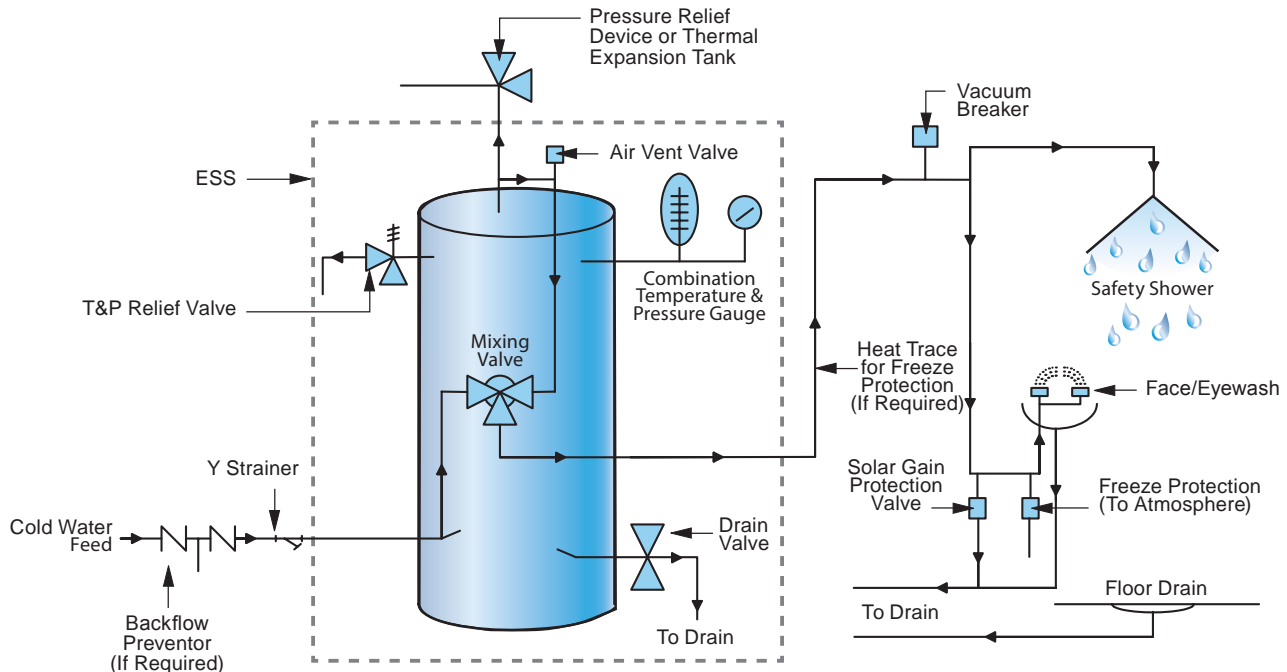
**Note:** If other criteria is needed consult ThermOmegaTech®.

**Example: 389-003000-000** The ESS Water Heater emergency tepid water delivery system with a storage capacity of 120 Gallons, 85°F set point of the mixing valve and a 4.5 KW rating. Storage tank is lined with Hydrastone cement and operates at 240 Volts single-phase power.

## ESS Water Heater Specifications

<b>Tank:</b>	Hydrastone Cement Lined Steel	<b>Tepid Water Outlet Size:</b>	1 1/4" Female NPT	<b>Mixing Valve Cv:</b>	10.0	<b>Elements:</b>	Copper Sheathed
<b>Storage Capacity:</b>	120 Gallons (see note)	<b>Drain Size:</b>	3/4" GHT	<b>Pressure Drop at 20 GPM:</b>	4 PSI	<b>Insulation:</b>	3" Polyurethane Foam
<b>Orientation:</b>	Vertical	<b>Relief Valve Size:</b>	3/4" Female NPT	<b>Minimum Supply Pressure:</b>	30 PSI	<b>Tank Warranty Standard: Optional:</b>	5 Year Non Pro-Rated 10 Year Non Pro-Rated
<b>Voltages:</b>	120 thru 600 Volt	<b>Relief Valve Type:</b>	T&P 210°F, 150 PSI	<b>Hi-Limit:</b>	190°F	<b>Electrical Warranty:</b>	1 Year
<b>Phase:</b>	1 or 3 Φ	<b>Thermostat Range:</b>	100-180°F	<b>Design WP:</b>	150 PSI	<b>Jacket:</b>	High Impact Colorized Composite
<b>Cold Water Inlet Size:</b>	1 1/2" Female NPT	<b>Piping:</b>	Copper Tubing	<b>Design TP:</b>	300 PSI	<b>Color:</b>	Brown and Tan

**Note:** Alternate storage capacities are available for smaller or larger requirements. Please consult factory for sizing requirements.



NOTE: For systems requiring recirculation see ThermOmegaTech® IOM for typical piping schematic.