



ESS Emergency Safety Shower Water Heater

Tepid Water for Emergency Safety Shower/Eyewash Stations

Features

- Heavy Duty Construction with Hydrastone cement lining provides tank longevity
- Copper-silicon alloy tappings cannot rust nor corrode
- High impact composite jacket cannot rust nor corrode and eliminates potential damage during installation and transit
- 3" thick polyurethane foam insulation reduces standby heat loss by over 24% compared to industry standard 2" insulated tanks

Perfectly Packaged System

- Factory packaged with the Therm-O-Mix® Station/WWM simplifies installation and ensures the safe and reliable supply of tepid water
- All electrical operating controls are factory selected and wired to ensure reliable operation
- Dial gauge provides visual indication of water temperature and pressure



Safety

- Mixing valve designed specifically for emergency drench systems ensures a constant flow of tepid water
- Mixing valve prohibits delivery of overheated water to prevent scalding
- Provides tepid water even when an accident causes a loss of electric power
- Reduces the risk of Legionella because water is stored at an elevated temperature

Reliable

- Full five (5) year non pro-rated tank warranty
- Each valve is performance tested at the factory to ensure proper operation

ESS Number Designation

Valve Criteria					
Family Designation	Storage Capacity	Tepid Water Temperature	Standard Ratings KW	Tank Type	Voltage/Phase/HZ
	0=120 Gal.	0=85°F	0=1.5 1=3 2=4 3=4.5 4=6 5=10 6=7 7=12	0= SL (Hydrastone Cement Lined)	0=240-1-60 1=480-3-60 2=208-1-60 3=277-1-60 4=120-1-60 5=480-1-60 6=208-3-60
389	0	0	3	0	0
					0
					000

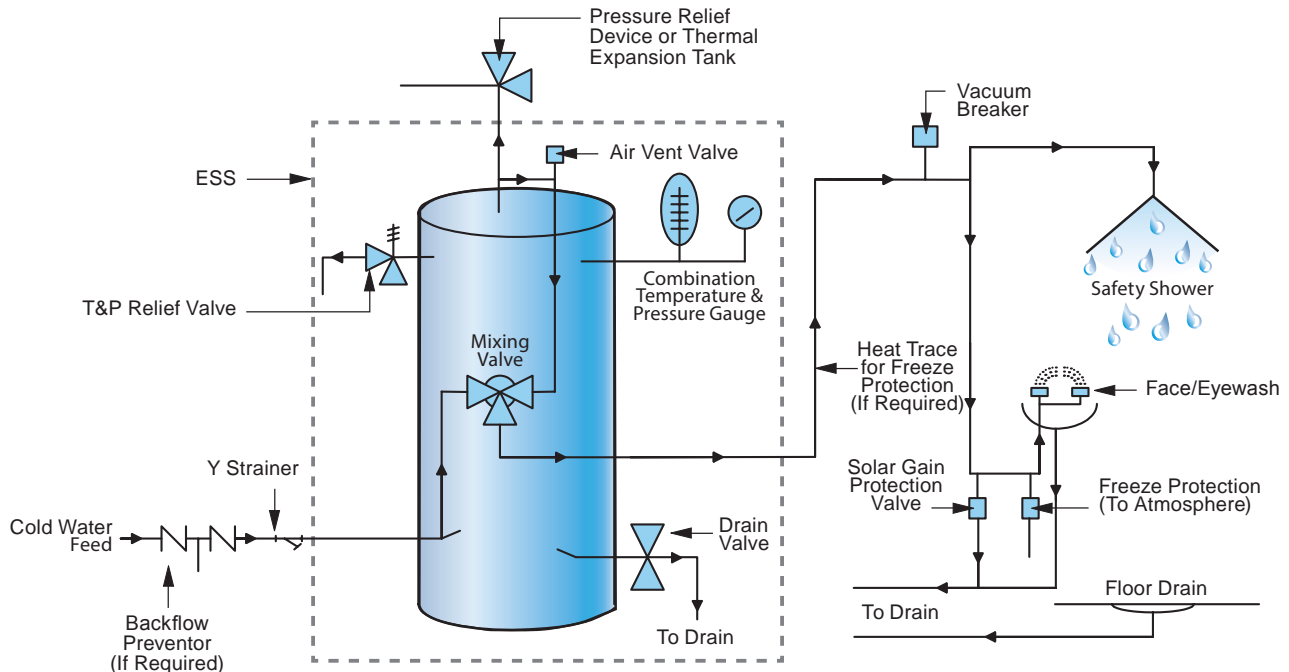
Note: If other criteria is needed consult ThermOmegaTech®.

Example: 389-003000-000 The ESS Water Heater emergency tepid water delivery system with a storage capacity of 120 Gallons, 85°F set point of the mixing valve and a 4.5 KW rating. Storage tank is lined with Hydrastone cement and operates at 240 Volts single-phase power.

ESS Water Heater Specifications

Tank:	Hydrastone Cement Lined Steel	Tepid Water Outlet Size:	1 1/4" Female NPT	Mixing Valve Cv:	10.0	Elements:	Copper Sheathed
Storage Capacity:	120 Gallons (see note)	Drain Size:	3/4" GHT	Pressure Drop at 20 GPM:	4 PSI	Insulation:	3" Polyurethane Foam
Orientation:	Vertical	Relief Valve Size:	3/4" Female NPT	Minimum Supply Pressure:	30 PSI	Tank Warranty Standard: Optional:	5 Year Non Pro-Rated 10 Year Non Pro-Rated
Voltages:	120 thru 600 Volt	Relief Valve Type:	T&P 210°F, 150 PSI	Hi-Limit:	190°F	Electrical Warranty:	1 Year
Phase:	1 or 3 Φ	Thermostat Range:	100-180°F	Design WP:	150 PSI	Jacket:	High Impact Colorized Composite
Cold Water Inlet Size:	1 1/2" Female NPT	Piping:	Copper Tubing	Design TP:	300 PSI	Color:	Brown and Tan

Note: Alternate storage capacities are available for smaller or larger requirements. Please consult factory for sizing requirements.



NOTE: For systems requiring recirculation see ThermOmegaTech® IOM for typical piping schematic.